



Score **Energy Limited**

Intelligent Gas Turbine Solutions™

www.score-energy.com

Component Parts Supply & Manufacture

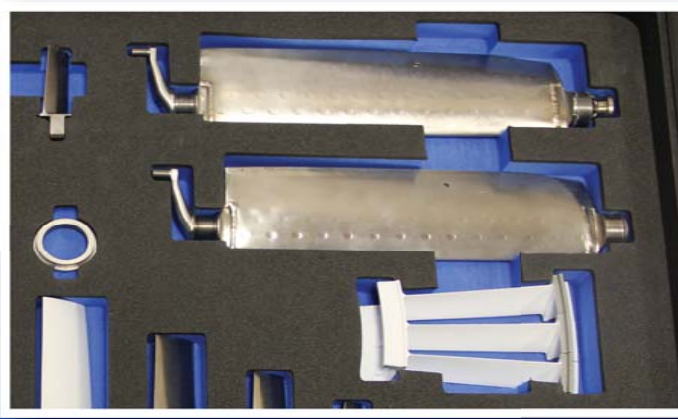
In support of our customers Score Energy maintains over \$30 million of both new and overhauled parts for the Rolls Royce, Avon, RB211 and Ruston (Siemens) TB5000 range of gas turbines, their fuel systems, accessories and auxiliaries. We also offer the highest quality Score Energy manufactured components for the RR Avon Gas Turbine, manufactured to the latest material specification at a significant saving compared to the OEM price list.

- Thermocouples
- Rotor Blades
- Stator Vanes
- Inlet Guide Vanes
- HP & IP Nozzle Guide Vanes
- HP, IP & LP Turbine Blades
- Cooper Beams
- Flames Tubes
- Discharge Nozzles
- Consumables
- Bearings

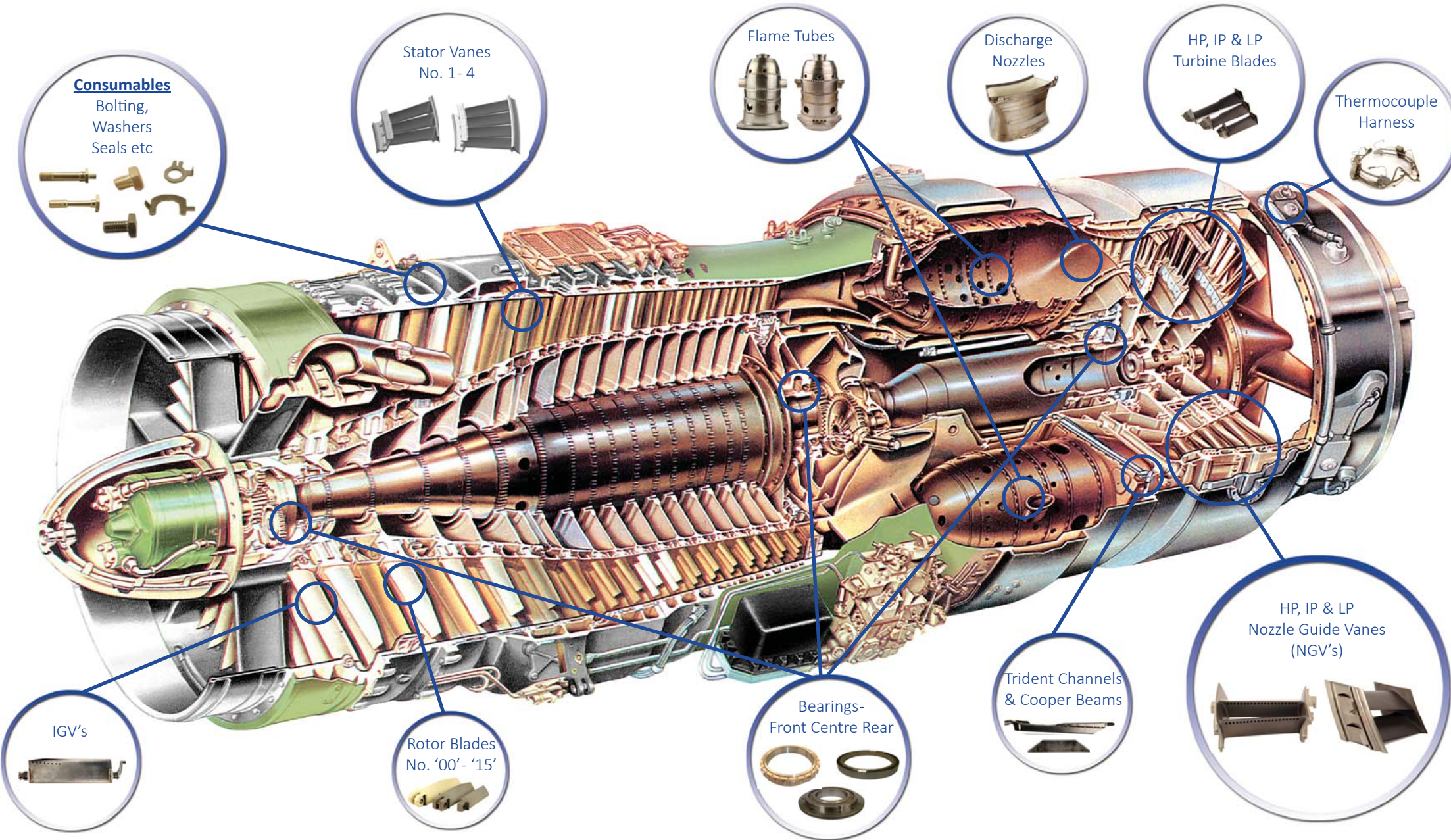
Our rotating and non-rotating parts are used worldwide on both standby and continuous running operations and have provided increased performance benefits to some of the biggest RR Avon operators on the planet.

Latest material and manufacturing technology:

- ✓ Quality that meets or exceeds the OEM standards
- ✓ Market leading warranty
- ✓ Most parts are available ex-stock



Score Energy Manufactured Avon 1533, 1534 & 1535 Turbine Parts



Improved reliability and huge savings available on Score Manufactured and Rolls Royce Parts

Company Headquarters:

Score Energy Limited
Ian M. Cheyne Building
Glen Test Facility
Wellbank
Peterhead
Aberdeenshire AB42 3GL
United Kingdom

Tel: + 44 (0) 1779 482 300
Fax: + 44 (0) 1779 482 345
Website: www.score-energy.com



For further information on our various product and service capabilities, please visit www.score-energy.com

Avon® and RB211® is a trademarks held by Rolls Royce plc, which is not affiliated with Score Group plc.

TB5000 is a trademark of Siemens AG, which is not affiliated with Score Group plc.

